

GENERAL NOTES

This document is the property of the FC Holm Architects CC and may not be reproduced, issued or used for any other than the specific purpose for which it was originally intended.

All materials and construction methods must comply with the National Building Regulations (act no. 103 of 1977) including all amendments, as well as all by-laws of the relevant local authority.

All materials and equipment must be fixed and finished off in accordance with the specifications of the manufacturer of such materials and equipment.

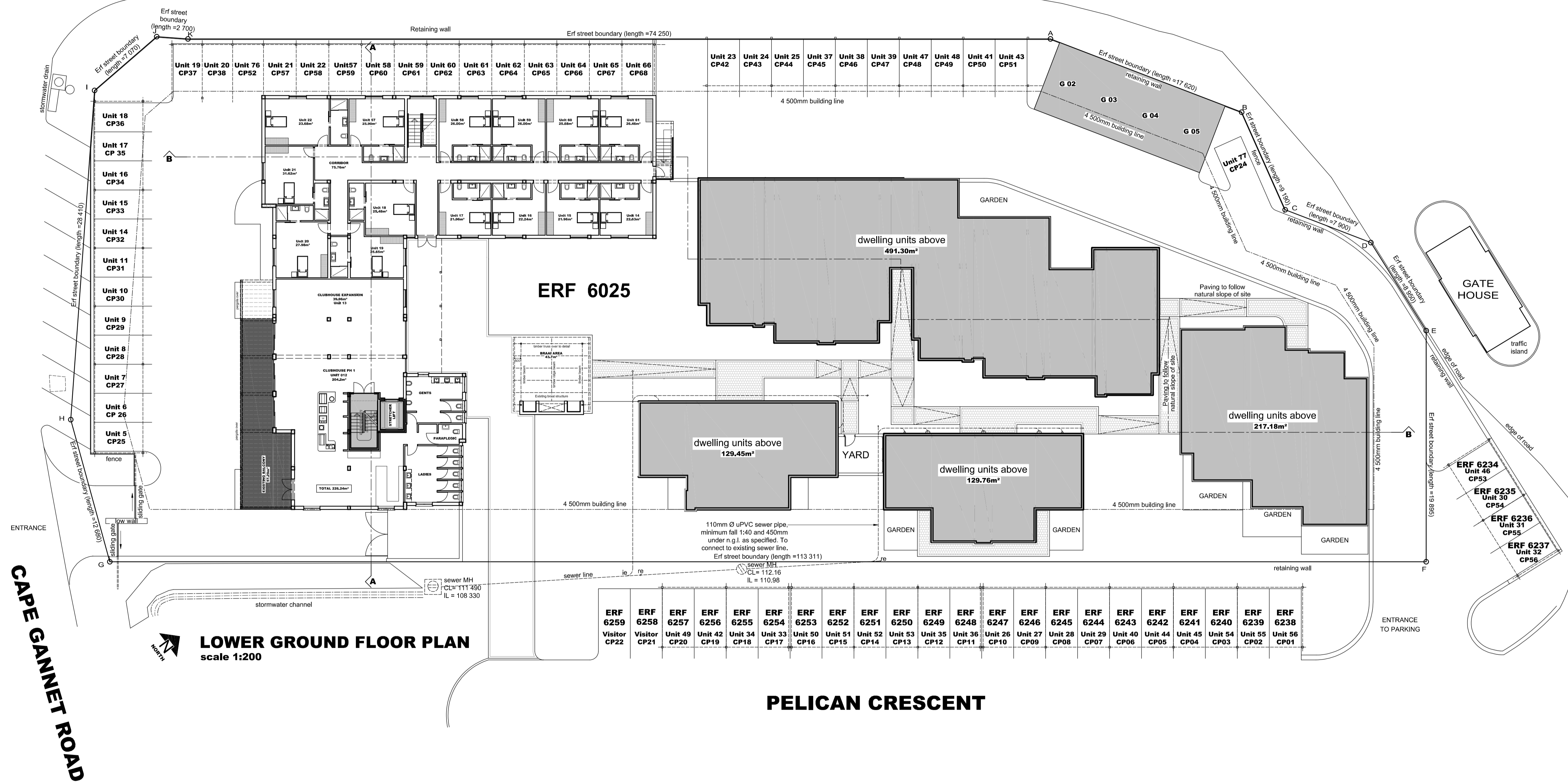
All dimensions must be checked on site. Any inconsistency or discrepancies must be pointed out to the principal agent for rectification or clarification before work is taken into hand.

Never scale from this drawing.

NOTES

Refer to the general specifications for material and methods for this project

RIETDIJKER ROAD



ERF 6025

LOWER GROUND FLOOR PLAN
scale 1:200

ERF 6259	ERF 6258	ERF 6257	ERF 6256	ERF 6255	ERF 6254	ERF 6253	ERF 6252	ERF 6251	ERF 6250	ERF 6249	ERF 6248	ERF 6247	ERF 6246	ERF 6245	ERF 6244	ERF 6243	ERF 6242	ERF 6241	ERF 6240	ERF 6239	ERF 6238
Visitor CP22	Visitor CP21	Unit 49 CP20	Unit 42 CP19	Unit 34 CP18	Unit 33 CP17	Unit 50 CP16	Unit 51 CP15	Unit 52 CP14	Unit 53 CP13	Unit 35 CP12	Unit 36 CP11	Unit 26 CP10	Unit 27 CP09	Unit 28 CP08	Unit 29 CP07	Unit 40 CP06	Unit 44 CP05	Unit 45 CP04	Unit 54 CP03	Unit 55 CP02	Unit 56 CP01

PELICAN CRESCENT

APPROVED BY
REGISTERED LAND SURVEYOR
J.H. BAILEY
PLS 0019D

REVISIONS

rev. no.	date	description
001	2016/11/26	- Revised design layout
002	2016/02/14	- Revised design layout
003	2016/02/19	- Revised design layout & areas
004	2016/05/07	- Revised design layout & areas
005	2016/05/21	- Revised design layout & areas



044 874 1606
info@fcholm.co.za
PO Box 9457
GEORGE
6530

**MONTE CRISTO
RETIREMENT VILLAGE
DE CARAVEL
CLUBHOUSE AND CARING**

**REAL RIGHTS OF EXTENSION
LOWER GROUND FLOOR PLAN**

scale	As indicated	drawn	HP
date	26/11/2015	checked	FC
drawing no.	10/021/D3102	revision	005